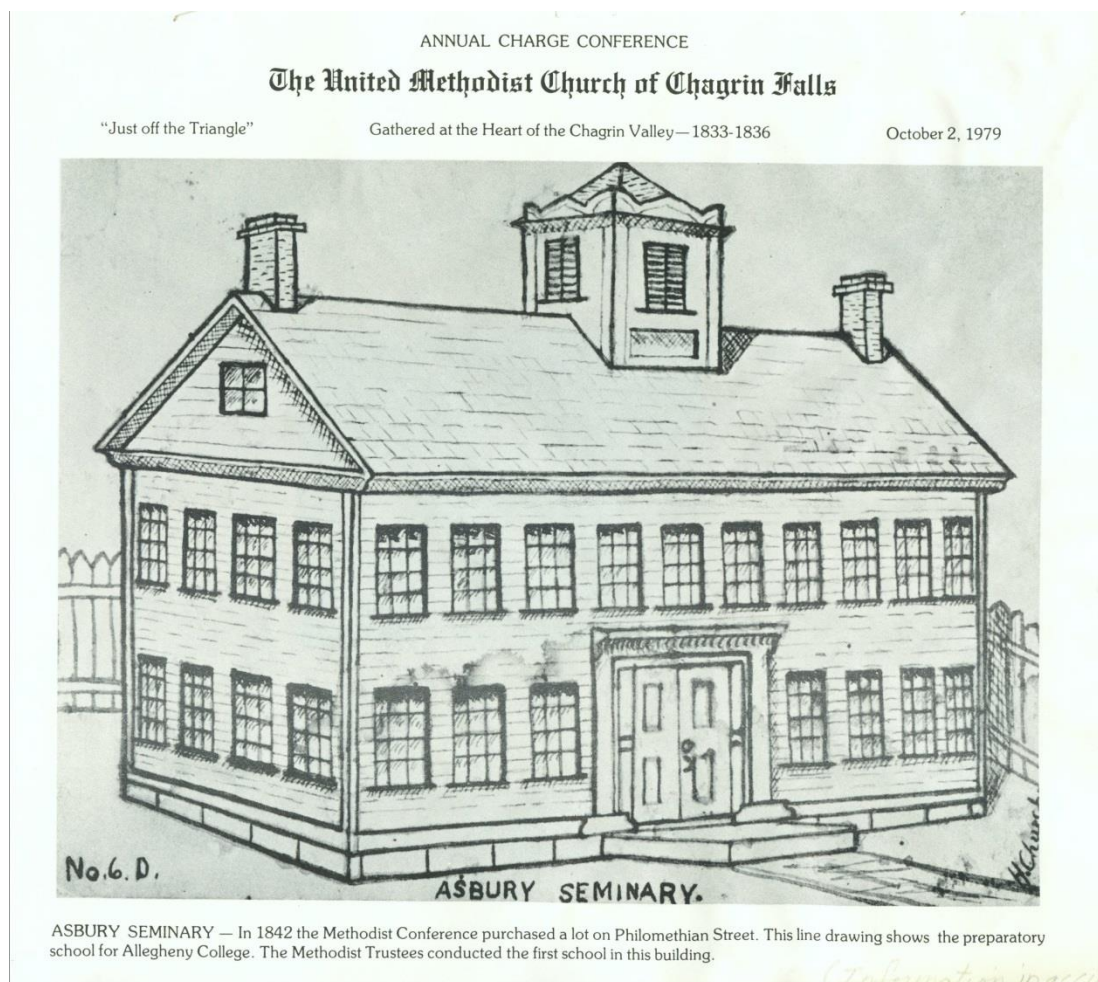


Did you know.....

....There has been a school on Philomethian Street since 1843?

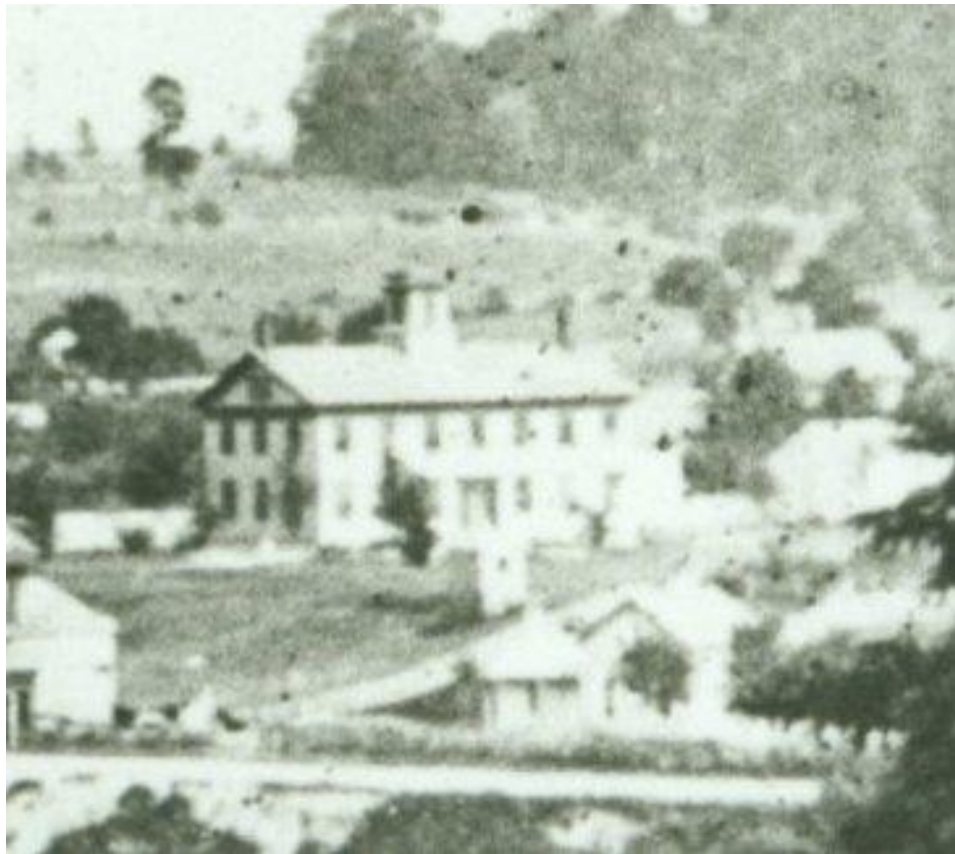
Not too many towns in America can lay claim to having a school in the same location for over 170 years. Chagrin Falls, a town that loves its traditions and history, can do just that. The first school to be built there was the Asbury Seminary. This school was privately owned, but conducted under the interest of the Methodist Episcopal Church. Lorenzo Dow (L. D.) Williams served as the first principal. Rev. Mattison taught languages, Reuben Harris taught mathematics and Miss Almeda Booth served as preceptress. Asbury Seminary was purchased by the board of education (which had been established in 1849) in 1858 as they consolidated the many one-room schools into a Union School. Hugh Christian was the first person to receive a Chagrin Falls High School diploma in 1879. He was the only person in his class. This school stood on this site until 1893 when it was sold as salvage. A bell was added to the belfry of the Asbury Seminary in 1852. This bell was moved to the 1885 school when it was constructed. The bell was removed when the 1885 school was demolished in 1940 and was put in the boiler room of the 1940 Philomethian addition. This bell became the victory bell at the High School from 1965 till it was stolen in 1970.



Asbury Seminary, as drawn by Henry Church Jr. Mr. Church drew many of the early school buildings.



View looking Southwest from Grove Hill. Asbury Seminary in back right of picture



Enlargement of photo above showing Asbury Seminary

In 1885 a new school building was built on Philomethian, just north of the Asbury Seminary. It was located where the eastern parking lot is now at the existing school on Philomethian is located. The school was known as the Union School. This school housed K-12 grades. It remained on this site until torn down in 1940. A 750 seat auditorium and additional class rooms were built in 1892. In 1909, a separate wood frame two classroom building was constructed for 1st and 2nd grades. A gymnasium was added to this school in 1923 for use by the new 1914 high school building on the same campus. In 1930 a separate wood frame cafeteria and home economics building was built on the north side of the Philomethian campus near Federated Church.



1885 School Building, (Asbury Seminary can be seen lower left corner) on Philomethian Street



1885 School Building.



1909 1st, 2nd grade addition (Left of 1885 School Building) on Philomethian Street

In 1914 a new High school was added to the Philomethian campus. This building celebrated its 100th anniversary in 2014 and is still in use today. In 1940, a large addition was built that consisted of space for an elementary school, library, auditorium, gymnasium, cafeteria and industrial arts wing. When completed, the 1885 brick school was torn down as well as the wood frame 1st and 2nd building. The wood cafeteria and home economics building was sold for scrap in 1946. A third floor was added above the cafeteria in 1952. The library was expanded in 1971. Renovations to the building were done in 1972. Major renovations occurred in 1989. This school was renamed the Chagrin Falls Intermediate School in 1999 and now houses 4th and 5th grades. At that time additional renovations occurred. The boilers were replaced in 2003.



1914 High School facing Washington Street. 1885 Union School Building is on the right



1940 Addition Construction



1940 Addition Construction



1940 Addition Construction



1940 Addition Construction



1940 Addition Construction